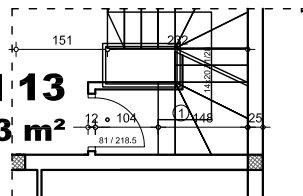
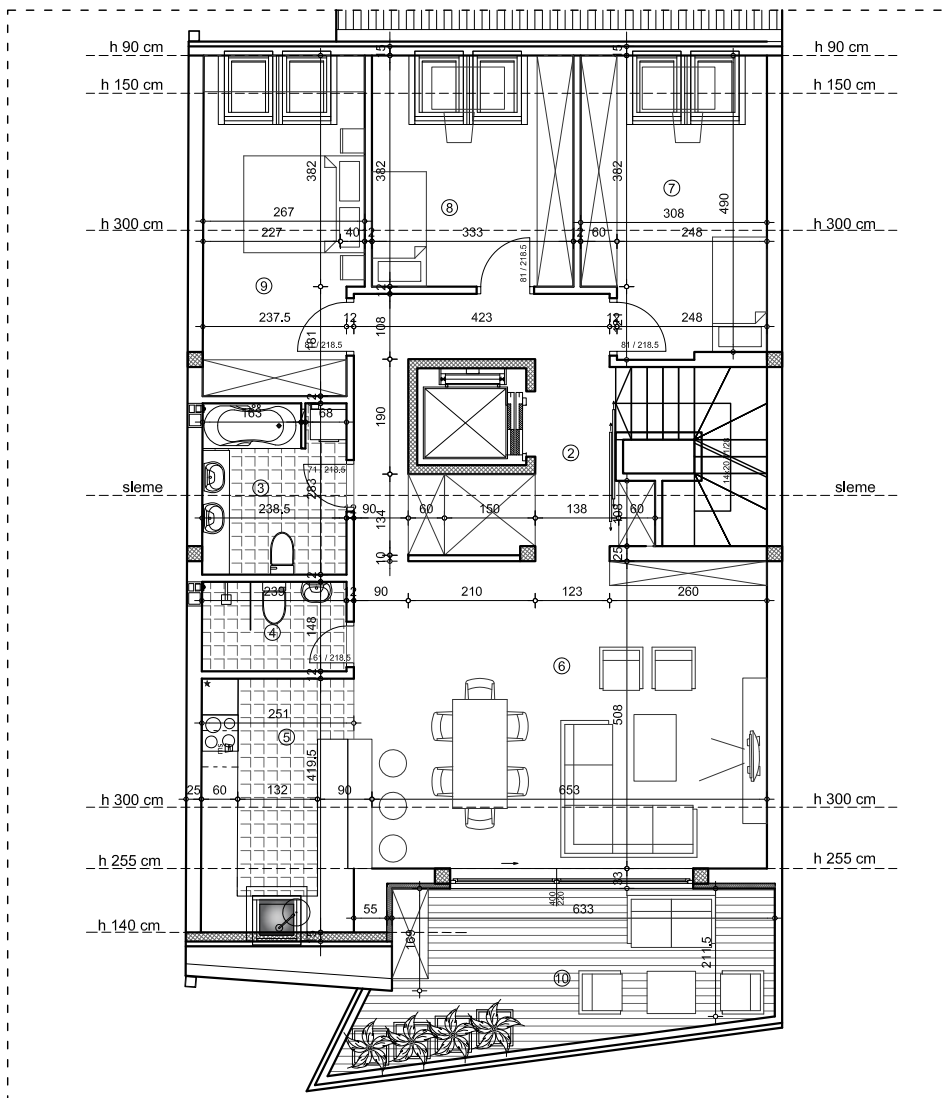


OSNOVA STANA
donji nivo 1:125

STAN 13
126.33 m²



OSNOVA STANA
gornji nivo 1:125

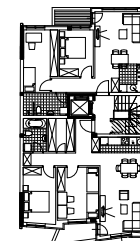


STAN 13 - četvorosoban (PENTHOUSE)

	pod	površina
1	ULAZ/STEPENIŠTE	ker.pl. 6.09 m²
2	ULAZ/HODNIK	parket 8.62 m²
3	KUPATILO	ker.pl. 6.70 m²
4	WC	ker.pl. 3.54 m²
5	KUHINJA	ker.pl. 10.56 m²
6	DNEVNA SOBA	parket 41.61 m²
7	SOBA	parket 12.68 m²
8	SOBA	parket 10.64 m²
9	SOBA	parket 12.82 m²
10	TERASA	ker.pl. 17.01 m²
UKUPNO:		130.28 m²

UKUPNO REDUKOVANO -3%: 126.33m²

OSNOVA POTKROVLJA OSNOVA DUPLEKSA



ulica

ulica



PENTHOUSE/STAN 13